

A worsening crisis at the center of U.S. health care

Without enough primary care physicians (PCPs), the health system cannot work for patients



Primary care cannot keep up with health care demands

The primary care workforce is shrinking¹⁻⁴



Not enough new doctors are choosing primary care



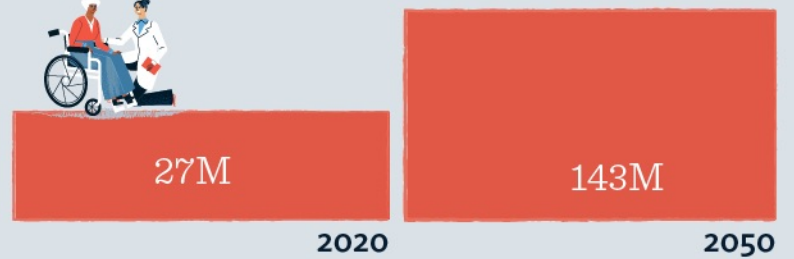
PCPs are leaving the workforce due to burnout, overwork, and retirement



Training opportunities in primary care are insufficient

The population is growing and aging¹

The number of people 50 and older with at least one chronic disease requiring ongoing management is expected to double



Sustained investment now can help meet this demand

40K+ more PCPs will need to enter the U.S. workforce by 2036⁵

Patients pay the price for primary care physician shortages



Reduced access to important disease screening and preventive services⁶⁻⁸



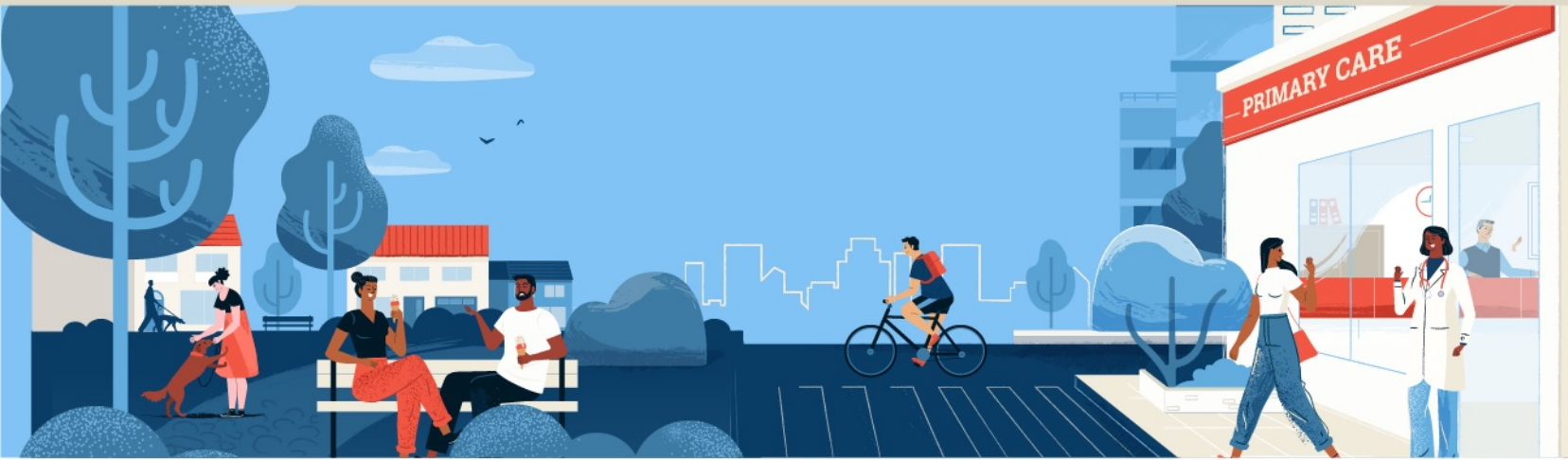
Lack of coordinated care critical to managing and preventing chronic disease⁶



Difficulty locating PCPs, causing care delays and lengthy wait times¹



Greater likelihood of emergency room visits⁸



It is not too late to reverse these trends and revitalize primary care



Expand the number of Medicare-funded Graduate Medical Education positions

Increasing the number of Medicare-supported GME positions can help alleviate shortages in rural and underserved areas by reducing medical student loan debt to encourage more medical students to pursue primary care careers.



Support payment models that value primary care services

Accelerating the transition to well-designed value-based payment models will encourage more health professionals to practice primary care and prioritize quality and outcomes over the number of services provided, helping lower health care costs and improving outcomes.



Support recruitment and retention programs

Program, like the National Health Service Corps, that recruit, train and retain, primary care physicians, as well as nurses, nurse practitioners, and physician assistants can help bridge the workforce gap.



Increase investment in the Teaching Health Center Graduate Medical Education Program

While most primary care takes place in the community setting (i.e., outside of hospitals), few medical students train in this setting. THCs provide those seeking to specialize in primary care with real-world experience to be successful.



Offer medical student debt assistance

Loan repayment or forgiveness can incentivize medical students to work in primary care settings.